

<b>A</b>	
Abducens nerve	230
Accessory ganglion	230
Accessory nerve	230
Acoustic ganglion	157, 181, 208, 230
acrosome	1
adhesive gland	73
alecithal egg	3, 205
allantoic artery	210
allantoic stalk	181, 210, 232
allantoic vein	209, 210, 231
allantois	179, 181, 183, 206
amniocardiac vesicle	118, 119, 133
amnion	155, 159
amniotic cavity	210
amniotic fold	155, 159, 206
animal pole	49
anterior (cranial) amniotic fold	155
anterior cardinal vein	74, 159, 180, 183, 235
anterior (cranial) intestinal portal	117, 119, 131, 132, 182
anterior neuropore	51, 117, 131, 155
antrum	5
anus	74
aortic arch	74, 158, 180, 181, 208, 234
apical bronchus	231, 234
archenteron	22, 50
arch of aorta	234
area opaca	106, 118, 132
area pellucida	106
area vasculosa	132
area vitellina	132
arytenoid cartilage	231

arytenoid fold	231
ascending aorta	209, 233, 234
atrial septum	209, 233
atrioventricular canal	233
atrium	74, 131, 158, 209
auditory placode	131, 133
axial filament	2
axial mesoderm	52

## B

basilar artery	234
bicuspid valve	233
blastocoel	21, 50, 205
blastocyst	205
blastoderm	21, 50, 106
blastodermic vesicle	205
blastomere	21, 49
blastopore	22, 50
blastula stage	21, 50
blastulation	21, 50
blood island	118, 132
Bowman's capsule	232
branchial arch	74, 180, 207, 208, 231
branchial cleft	207
branchial groove	155, 157, 180, 208
brain vesicle	51
bulbus cordis (arteriosus)	131, 158

## C

calyces of metanephros	233
cardinal vein	180
caudal artery	74
caudal flexure	179, 207
central blastomere	106
cervical sinus	207
centrolecithal egg	4
cerebral hemisphere	179, 182

cervical flexure	155, 207
chorion	155, 159, 206
chorionic placenta	206
chorionic villi	206
chromosome	1
cleavage	21
cleavage cell	21
clitoris	229, 232
cloaca	183, 210, 211, 232
cloacal membrane	183
closing plate	157
coelom	118, 132, 159
collecting tubules of metanephros	233
colon	232
common cardinal vein	74, 159, 183, 235
common iliac artery	235
copula	231
corpus luteum	7
cranial (anterior) amniotic fold	155, 179
cranial flexure	155, 206
cranial ganglion	181, 207
cranial nerve	230
cumulus oophorus	7

## D

dermatome	159, 210, 230
descending aorta	234, 235
diencephalon	73, 75, 79, 131
differentiation	1, 22, 51
diploid (2n)	1, 21
discoidal cleavage	105
distal centriole	2
dorsal aorta	74, 158, 180, 183
dorsal lip of blastopore	50
dorsal mesentery	182, 210, 231

dorsal mesoderm	107, 118
duct of Cuvier	74, 159, 180
ductus arteriosus	234
ductus venosus	158, 183, 209, 231, 235
duodenum	182, 209, 232

## E

ectoderm	22, 50, 107
egg	2
egg albumen	105
egg capsule	49
ejaculatory duct	232
embryo	1
embryo cell	205
embryonic disc	205
embryonic endoderm	205
endocardial cushion	209, 233
endocardium	133
endoderm	22, 51, 106, 107
endolymphatic duct	180, 229
endometrium	205
ependymal layer	230
epiblast	107
epiboly	50
epidermal ectoderm	52
epididymis	232
epiglottis	231
epimyocardium	133
epiphysis	75, 179
esophagus	157, 209
external auditory meatus	229
external carotid artery	234
external genitalia	229
extraembryonic area	132

extraembryonic coelom	159, 206
extraembryonic ectoderm	205
extraembryonic endoderm	205
extraembryonic membrane (structure)	155, 206
extraembryonic mesoderm	206

## F

Facial nerve	230
falciform ligament	231
female pronucleus	49, 105
fertilization	1, 21
fertilization cone	21
fertilization membrane	21
fertilized egg	21, 49, 105
first branchial arch	156, 157, 182, 207
first meiotic division	1
first polar body	2
first visceral arch	157
flagellum	2
flexion	155
follicle cell	5
fore brain	73
fore gut	51, 73, 79, 117, 131
fore leg bud	207
frontal section	75
Froriep's ganglion	230

## G

gall bladder	232
gamete	1, 233
gametogenesis	1
gastrocoel	22, 50
gastrula stage	22, 50
gastrulation	22
Geniculate ganglion	157, 181, 208, 230

genital ridge	233
genital tubercle	229, 232
germinal disc	105
germinal ridge	233
germinal vesicle	6
germ layer	22
gill	74
gill plate	73
glomerulus	232
Glossopharyngeal nerve	230
glottis	231
golgi apparatus	1
gonad	1
graffian follicle	5
gray crescent	49
greater omentum	231

## H

haploid (n)	21
hatching tadpole	74
head (skin) ectoderm	118
head fold	117
head-folded stage	108
head mesenchyme	117, 118
head process (notochord)	107
head process stage	107
heart	74, 118
heavily telolecithal egg	3, 105
Hensen's node	107
hepatic portal vein	232, 235
hind brain	73, 131
hind gut	51, 73, 156
hind leg bud	207
holoblastic cleavage	49

holoblastic equal cleavage	205
holoblastic unequal cleavage	49
hyoid arch	156, 157, 181, 207
hyomandibular cleft	181, 207, 229
hypoblast	107
Hypoglossal nerve	230
hypophysis	73, 75, 131

## I

immature egg	21
implantation	205
inferior vena cava	209, 231, 235, 236
infundibulum	75, 131, 133, 156, 179, 208, 230
infundibulum of oviduct	105
inner cell mass	205
inner shell membrane	105
interatrial foramen	233
intermediate layer	230
intermediate mesoderm	107, 118, 133, 159
internal carotid artery	232
intersomitic furrow	118
interventricular foramen	233
intestinal loop	210, 232
intraembryonic circulation	180
intraembryonic coelom	159
invagination	22, 155
involution	50, 107
isolecithal egg	3
isthmus	155, 208
isthmus of oviduct	105

## J

Jugular ganglion	157, 181, 208, 230
------------------	--------------------

## L

larva stage	22
laryngotracheal groove	157, 181, 182, 209

larynx	231
lateral amniotic fold	155, 179
lateral body fold	159
lateral bronchus	231, 235
lateral lip of blastopore	50
lateral (plate) mesoderm	52, 79, 107, 118, 159
lateral nasal process	229, 230
lateral swelling	231
leg bud	179
lens placode	79, 155
lens vesicle	181, 230
lesser omentum	231
liver diverticulum	51, 74, 158, 182
liver sinusoids	231, 235
local thickening	51
lower jaw	229
lung bud	181, 182, 209

## M

macromere	49
male pronucleus	49, 105
mammary ridge	229
mandibular arch	156, 157, 181, 182, 207
mandibular process	156, 157, 182, 207, 209
mandibular ramus	230
mantle layer	230
marginal blastomere	106
marginal layer	230
maturation	1
mature ovum	21
maxillary process	156, 157, 182, 207, 209
maxillary ramus	230
median nasal process	229, 230
medullary plate	51, 107
meiosis	1



meroblastic cleavage	105
mesencephalon	75, 131, 179, 207, 229
mesoderm	22, 50, 51, 107, 117,
mesolecithal egg	3
mesonephric duct	183, 209, 232
mesonephric kidney region	229
mesonephric tubule	209, 232
mesonephros	183, 207, 209, 232
metamorphosis	22, 75
metanephric duct	233
metanephrogenic mesenchyme	233
metencephalon	131, 207
microlecithal egg	3
micromere	50
mid brain	73, 131
mid gut	51, 73, 158, 182
mitochondria	2
mitosis	1
moderately telolecithal egg	3
morula	21, 50
mouth	180, 208
myelencephalon	131, 180, 208, 229
myotome	159, 210, 230

## N

naked filament	2
nasal pit	179, 182, 229, 230
nasal placode	80, 157, 179, 208
nasolacrymal groove	229
nervous layer	157, 181, 230
nervous system	51
neural canal	133, 181, 207
neural ectoderm	51
neural fold	51, 117, 118
neural groove	51, 118, 118

neural plate	51, 107, 117, 119
neural tube	51, 117
neurocoel	133, 181, 207, 229
neuromere	181, <b>207, 229</b>
neurula stage	<b>51</b>
<b>Nodose ganglion</b>	<b>230</b>
notochord (notochordal process)	<b>52, 74, 107, 117</b>
notochordal process stage	107
nucleolus	<b>5</b>
<b>0</b>	
Oculomotor nerve	<b>230</b>
Olfactory pit	179, 182, 207, 230
olfactory placode	<b>79, 157, 179, 208</b>
omental bursa	231
omphalomesenteric artery	158, 180, 183
omphalomesenteric vein	<b>132</b>
oogenesis	<b>12</b>
oogonia	<b>2</b>
ootid	<b>2</b>
<b>ophthalmic ramus</b>	<b>230</b>
optic cup	<b>79, 155, 157, 208, 230</b>
optic stalk	<b>79, 157</b>
optic vesicle	<b>73, 131, 133, 155</b>
oral plate (membrane)	<b>75, 118, 157, 180</b>
organogenesis	22, 51
<b>otic placode</b>	<b>131, 133, 155</b>
<b>otic vesicle (otocyst)</b>	<b>73, 79, 155, 157, 180, 229</b>
outer shell membrane	<b>105</b>
ovarian sac	<b>4</b>
ovarian wall	<b>4</b>
ovary	<b>2, 233</b>
oviduct	<b>105</b>
oviposition	106

ovulation	2
ovum	2
<b>P</b>	
pancrease	182, 209, 232
partial cleavage	105
pelvis of metanephros	233
penetration	21
penis	229, 232
pericardial cavity	75, 118
peritoneum	4
perivitelline space	21
Petrosal ganglion	230
pharyngeal membrane	118, 180
pharyngeal pouch	73, 157, 180, 208
pharynx	74, 180, 182, 208
pigment	49
pigmented layer	157, 181, 230
pineal gland	75, 179
pituitary gland	75, 131, 156, 179
placenta	205
plasmalemma	2
pleural cavity	182, 209, 231
polylecithal egg	3
post anal gut	183
postbranchial body	231
posterior cardinal vein	74, 158, 180, 183, 209, 235
posterior (caudal) intestinal portal	156, 158, 183
prehatching stage	73
preoral gut	132, 180, 208, 231
primary bronchus	209
primary follicle	5
primary oocyte	2
primary spermatocyte	1

primitive fold	107
primitive groove	107
primitive gut	22, 50
primitive heart	118
primitive knot	107
primitive pit	107
primitive streak	107, 117, 205, 206
primordium germ cell	1, 233
proamnion	107
pronephric duct	80, 159
pronephric tubule	80, 159
pronephros	73, 74, 80, 159
prosencephalon	73, 131
proximal centriole	2
pulmonary aorta	233
pulmonary artery	234, 235
pulmonary vein	234

## R

Rathke's pouch	75, 156, 157, 179, 208, 230
rectum	209, 210
retinal layer	157, 181, 230
rhombencephalon	73, 131

## S

sclerotome	159, 210, 230
secondary follicle	5
secondary oocyte	2
secondary spermatocyte	1
second branchial arch	156, 157
second meiotic division	1, 51, 105
second polar body	2
secretory tubules of metanephros	233
segmentation division	21
Semilunar ganglion	157, 181, 208, 230

seminal vesicle	232
seminiferous tubule	4
septum transversum	229
serosa	206
Sertoli sustentacular cell	4
Sessel's pocket	132, 180
sex cell	1, 233
sex gland	233
shell	105
shell gland of oviduct	105
sinus rhomboidalis	117, 156
sinus terminalis	132
sinus venosus	74, 131, 158, 180, 183, 209, 233, 235
small intestine	210, 232
somatic mesoderm	118, 132, 133, 206
somatopleur	206
somite	52, 73, 118, 119, 159, 229, 230
sperm (spermatozoon)	1, 2
spermatid	1
spermatogenesis	1
spermatogonia	1
spermiogenesis	1
spinal cord	51, 131, 133, 208, 210, 230
spinal ganglion	230
splanchnic mesoderm	118, 132, 133, 206
splanchnopleur	206
stem bronchus	231
stomach	73, 74, 75, 156, 157, 182
stomodaeum	158, 182, 209, 231
subcardinal vein	236
subcaudal pocket	156
subcephalic pocket	117, 118, 131, 132
subclavian artery	234
subgerminal cavity	106
superior ganglion	157, 181, 208, 230

superior mesenteric artery

235

## T

tail bud

73, 132, 156

tail bud stage

73

tial flexure

179

tail fin

74, 80

tail fold

156, 158

telencephalon

131, 207, 229

telolecithal egg

3

tertiary follicle

5

testis

1

theca externa

5

theca interna

5

third branchial arch

156

thyroid gland

80, 157, 181, 182, 209, 231

tongue

208, 231

torsion

155

trachea

157, 209, 231

transverse septum

229, 231, 233

tricuspid valve

233

Trigeminal nerve

230

trophoblast

205

trunk

207

tuberculum impar

208, 231

## U

Ultimobranchial body

231

umbilical artery

232, 235

umbilical cord

232

umbilical vein

209, 210, 232, 235

unfertilized egg

52

upper jaw

229

ureter

233

urogenital sinus

232, 233

## V

vagina	105
Vagus nerve	229
vasa efferentia	232
vas deferens	232
vegetal pole	3, 49
venous system	158
ventral aorta	158, 183, 234
ventral ectoderm	118
ventral lip of blastopore	50
ventral mesentery	231
ventral mesoesophagus	231
ventral sucker	73
ventricle	73, 158, 209
ventricular septum	209, 233
visceral arch	74, 180
visceral groove	74, 180, 208
vitelline artery	74, 158, 180, 183
vitelline circulation	180, 206
vitelline membrane	21
vitelline plexus	180
vitelline vein	74, 132, 158, 180, 183
vitelline vessel	74, 132

## W

wing bud	179
----------	-----

## Y

yolk	2, 3
yolk plug	50
yolk plug stage	50
yolk sac cavity	206
yolk sac endoderm	206
yolk sac placenta	206
yolky endoderm	74

**Z**

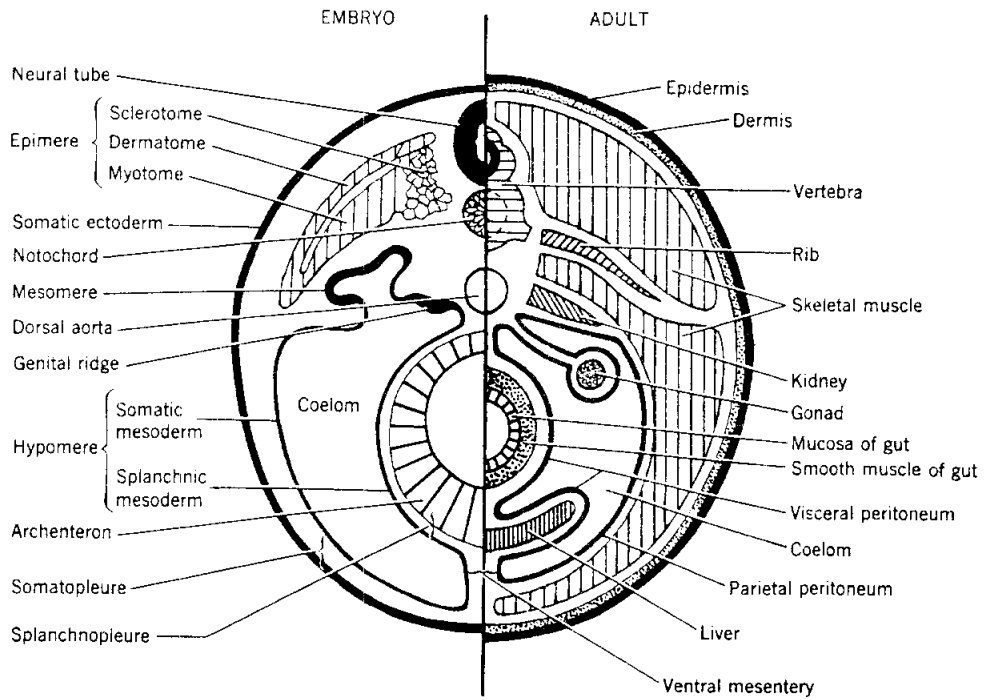
zona pellucida

5

zygote

1, 21, 49





Cross-sectional diagram correlating embryonic and adult structure.

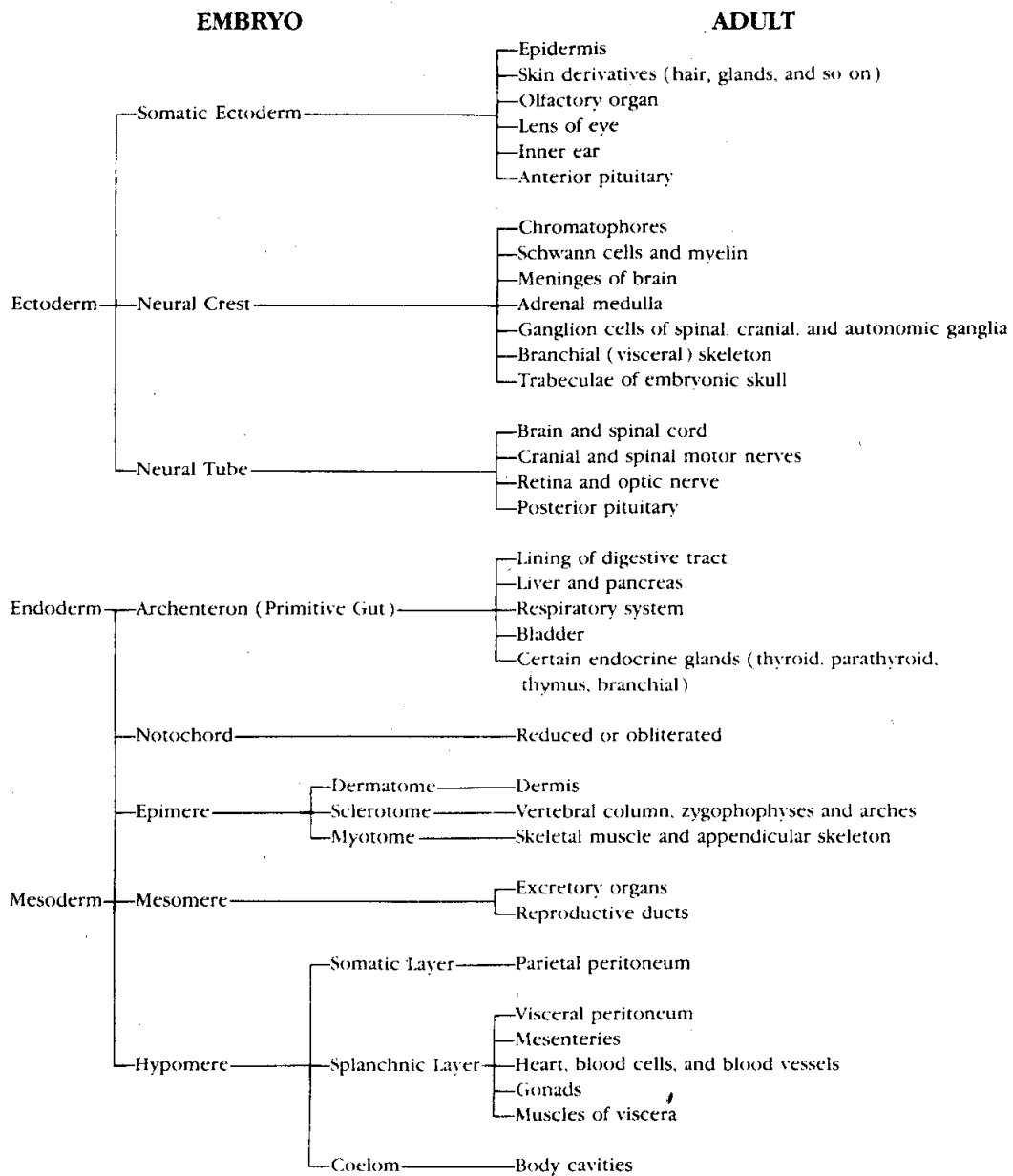
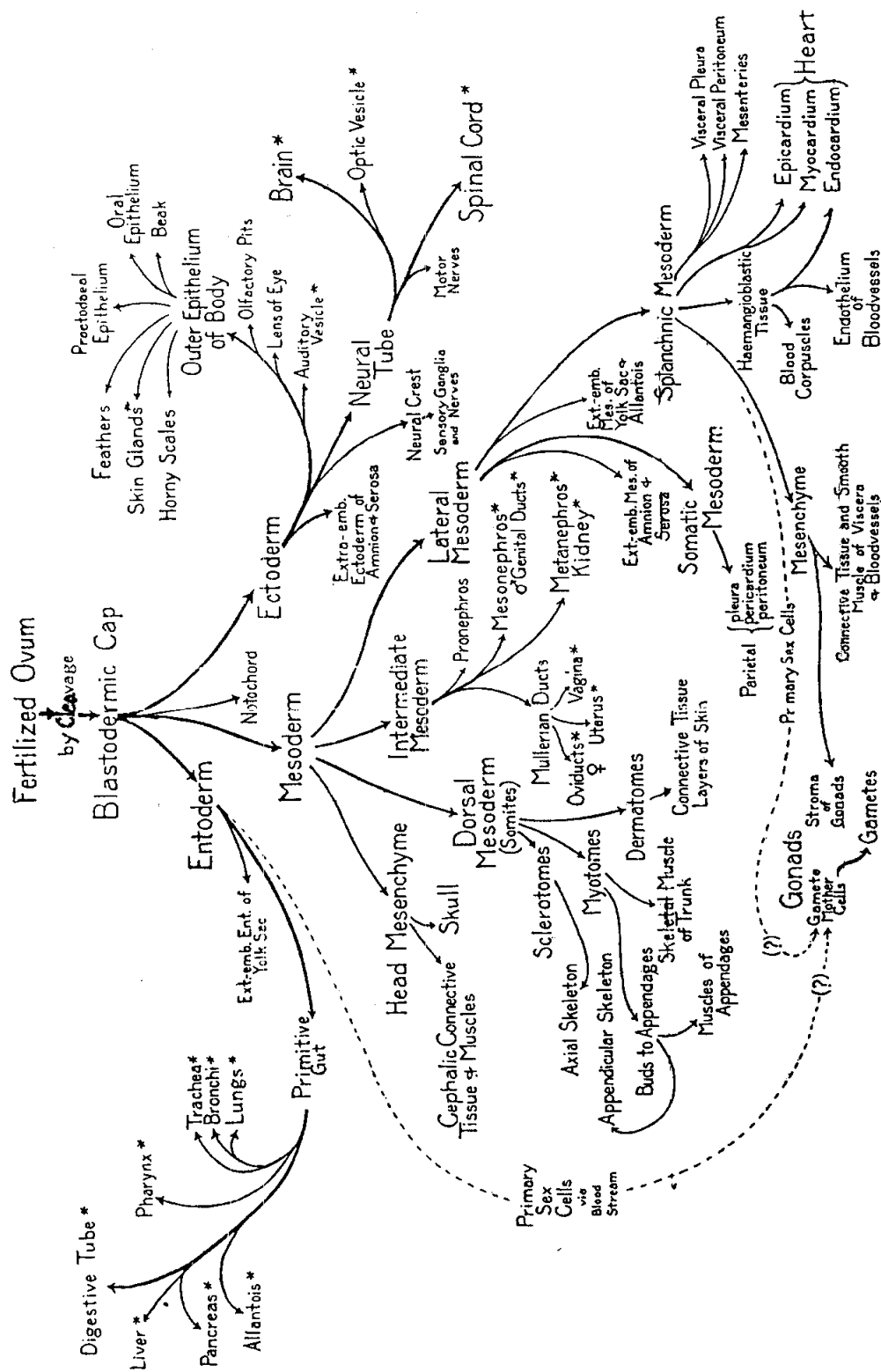


Chart showing the embryonic differentiation of the principal parts of the adult body.



\* Chart indicates origin of epithelial part of organ. All starred organs have secondary supporting investment of mesodermal origin.

Chart showing the derivation of various parts of the body by progressive differentiation and divergent specialization. Note especially how the origin of all the organs can be traced back to the three primary germ layers.

(Pattern: Embryology of the Chick. Copyright The P. Blakiston Company)



พิมพ์ที่... สำนักพิมพ์มหาวิทยาลัยรามคำแหง  
**Ramkhamhaeng University Press.**



35244321 7

